

City of Grand Rapids Recycling Newsletter

SPRING 2024 (VOL. 4)



The City of Grand Rapids Public Works Department Recycling Program makes it easy to recycle! Since 2010, Grand Rapids has been a single-stream recycling program. This means that all clean recyclable materials are able to be recycled together in one cart.

Recycling is available to all residents of Grand Rapids. For more information on how to start, stop or change your service and to find the recycling pick up schedule, click on the City of Grand Rapids Public Works link below.

Recycling does not need to be a chore. There are so many ways you can recycle. Donating clothes, reusing plastic bottles and cups, or even turning old materials into new art projects. With recycling the possibilities are endless!

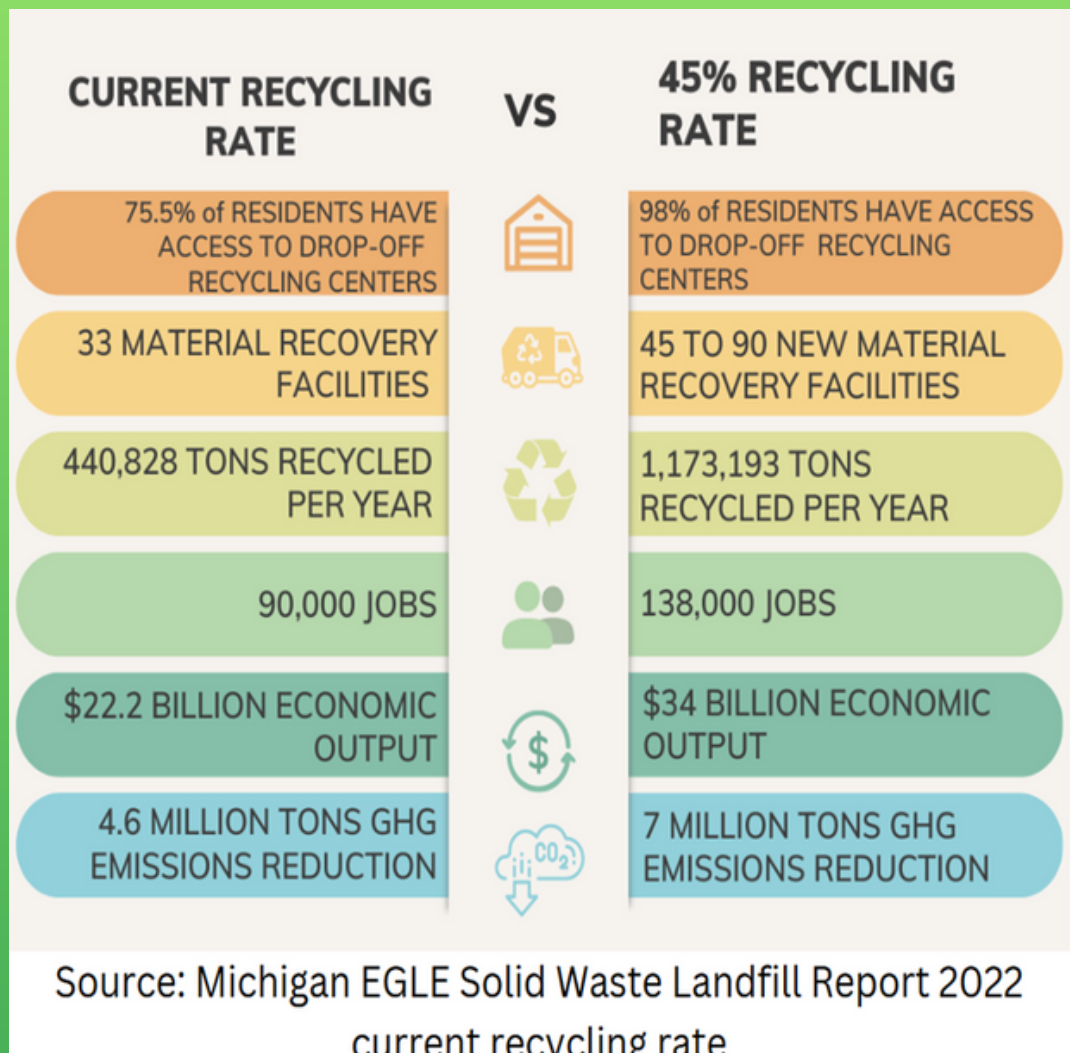


We aim to make sure the City's environment is healthy. To do this, we use the latest cutting edge technology for waste, recycling, and street management. We are also committed to making the City of Grand Rapids one of the most sustainable cities in the U.S.

Each recycling cart is made with 40% recycled plastic and the program is available to all residents who have access to public streets.

DID YOU KNOW?

The national average recycling rate is **32%**. Michigan's current recycling rate is at **21%** and the City of Grand Rapids recycling rate is at **30%**. The Michigan Department of Environment, Great Lakes and Energy wants to increase recycling rates throughout the state to **45%** by 2030! A goal like that means that there is work to be done!



Recycling Reality Check Quiz

Have you taken the Recycling Reality Check Quiz yet? Test your knowledge today!

[Take the Quiz Here](#)

Take the
Grand Rapids
Recycling
Survey [HERE](#)

4 FACTS ABOUT RECYCLING IN GRAND RAPIDS

Residents have options for both curbside pickup and recycling drop off centers

Recycling services are funded by property taxes at no out of pocket cost for all Grand Rapids residents. Each household has an option of a 64-gallon or 96-gallon recycling cart. Residents can also drop off recyclable materials at the Kent County Recycling and Education Center in Grand Rapids.

The Kent County Recycling and Education Center

The Kent County Recycling Center provides FREE tours of the facility for individuals and groups. Residents can see where their recycling goes and how it is processed into new materials. [CLICK HERE](#) for more information.

Plastic shopping bags can be recycled, just NOT in your recycling bin!

These can be recycled at a local Meijer, Lowes, or Target store (please verify with the store first). You can also search [this list](#) for places that recycle plastic bags.

Give Materials a New Life

Did you know that a family household creates over 750 pounds of recyclable material each year. That is around 35% of the total waste for a family every year!

For more information click [HERE](#)



THE BASICS OF
COMPOSTING

Compost: a dark, crumbly, earthy-smelling soil produced by the decomposition of organic materials.

Did you know you can recycle your food waste through **composting**? This earth day, compost and learn how it can help mother earth!

There are many different ways to compost including: **home composting, community composting, on-site composting, municipal composting, commercial composting** and **industrial composting**. [Click Here](#) to learn more!

Want to check out your Carbon Footprint?
[Click Here](#)

FOR MORE INFORMATION ON COMPOSTING AND HOW TO START YOUR OWN PILE
[CLICK HERE!](#)

Yard Waste Season Is Here!

Did you know that in addition to a curbside yard waste cart, there is a free drop-off site for yard waste?

You can drop-off leaves, brush, and tree branches at 2001 Butterworth SW. This is offered to **Grand Rapids residents only!**

Yard Waste **includes**: Grass clippings, Leaves, Brush, Twigs (less than two inches in diameter), Garden Plants, Tree Limbs - cut 5' or less, Logs - cut 5' or less

Yard Waste **does not include**: Sod, Dirt, Stones, Broken concrete, Trees, Railroad Ties, Stumps, Animal feces and dead animals.

Mulch and Compost Pickup - 2,000 yards of mulch and compost will be available each season. City residents will be allowed to pick up to one cubic yard each season on a first come basis.

Compost and mulch are available for pickup during normal business hours each Saturday. If you would like to purchase more material beyond one cubic yard, the retail prices are as follows:

- **Screened Compost - \$19.50 per yard**
- **Natural Wood Mulch - \$9.25 per yard**
- **Wood Chips - \$5.25 per yard**
- **Spring Soil - \$19.50 per yard**

For more information [Click Here!](#)

Indoor Spring Cleaning

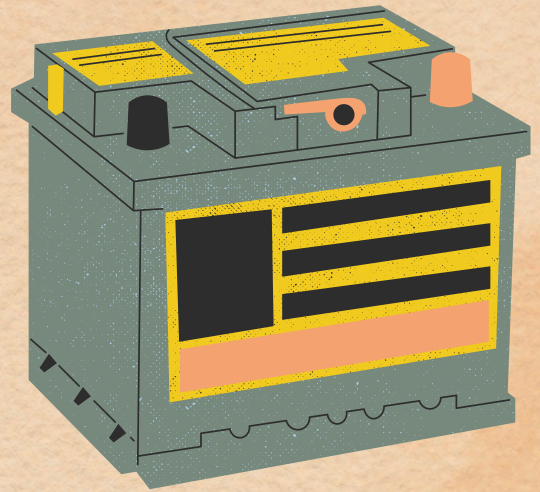
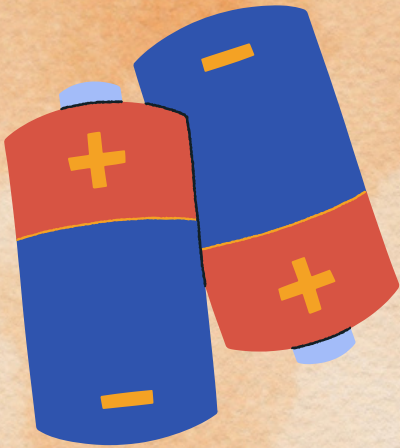
As you prepare for spring cleaning, we have solutions for hazardous materials that **CANNOT** be disposed of in your trash or recycling carts such as:

- **Toxic**- poisonous or lethal when ingested, touched or inhaled
- **Flammable**- ignitable and burns easily
- **Corrosive**- eats through materials and living tissue
- **Reactive**- can possibly explode or react with other chemicals



Kent County SafChem Program collects household hazardous waste for FREE
[Click Here](#) to find out more!

Where Can Batteries Go?



Batteries DO NOT belong in your trash or recycling curbside carts!

Lithium or other corrosive batteries such as those in: e-cigarettes, vape pens, car batteries and any other lithium-ion batteries should NEVER be put in your curbside trash and recycling carts!

These electronics are not able to be conventionally recycled and have the potential to destroy trucks, machinery and hurt employees.

To find an appropriate place to dispose of batteries [Click Here](#)

Look Out For The Street Sweepers!

The City of Grand Rapids Public Works Department is unveiling two new ALL ELECTRIC street sweepers! These zero emissions street sweepers will be prioritizing business districts, major trunklines, and paying more attention to bike lanes.

But do not worry, our street sweeping team will still sweep every city street along our 41 different routes.

The two new sweepers will remove the equivalent of 51.5 metric tons of CO2 emissions over the course of one year!

To learn more about our all new M3EV electric street sweepers [Click Here!](#)





RECYCLING GUIDE

Kent County Recycling & Education Center | reimaginetrash.org



KENT COUNTY
DEPARTMENT OF
PUBLIC WORKS

RECYCLE THESE ITEMS

CLEAN, EMPTY & LOOSE (NOT BAGGED OR BUNDLED)

CARDBOARD & PAPER



PLASTIC BOTTLES, CUPS & CONTAINERS

Rigid plastics #1-7; no foam or flexible plastics



GLASS BOTTLES & JARS

METAL CANS, BOTTLES & FOIL

MILK, JUICE & SOUP CARTONS



If the cap/lid and container are the same material, keep them attached. If they're different materials, detach and recycle separately.

KEEP OUT OF RECYCLING CONTAINERS!



**SEPARATE
OUT
RECYCLING
TRASH**



No hazardous waste or chemicals:
Batteries, electronics, propane tanks, fuel, chemicals, ammunition or other hazardous waste.



Nothing that would tangle:
Plastic bags, flexible plastics, string lights, extension cords, clothing, hoses, tarps, hangers, etc.



No bundled or bagged recycling:
Recyclables need to be loose in order to be sorted properly.



No foam plastics:
Foam take-out containers or cups, blocks of styrofoam, packing peanuts, foam coolers, etc.

Have an item you'd like to recycle that's not on this guide? We can help!
www.reimaginetrash.org | recycle@kentcountymi.gov | 616-632-7920

DO YOU RECYCLE?

Economic Benefits Environmental Benefits

- Recycling creates American jobs in the recycling industry
- Recycling supplies American manufacturers with raw materials
- Recycling keeps valuable materials out of landfills

- Recycling conserves natural resources and energy
- Recycling is an investment in our community's environmental health
- Recycling prevents pollution and other environmental impacts from raw materials extraction

**BUT
WHERE
DOES IT
ALL GO?**



TO START RECYCLING

www.reimaginetrash.org/recycle